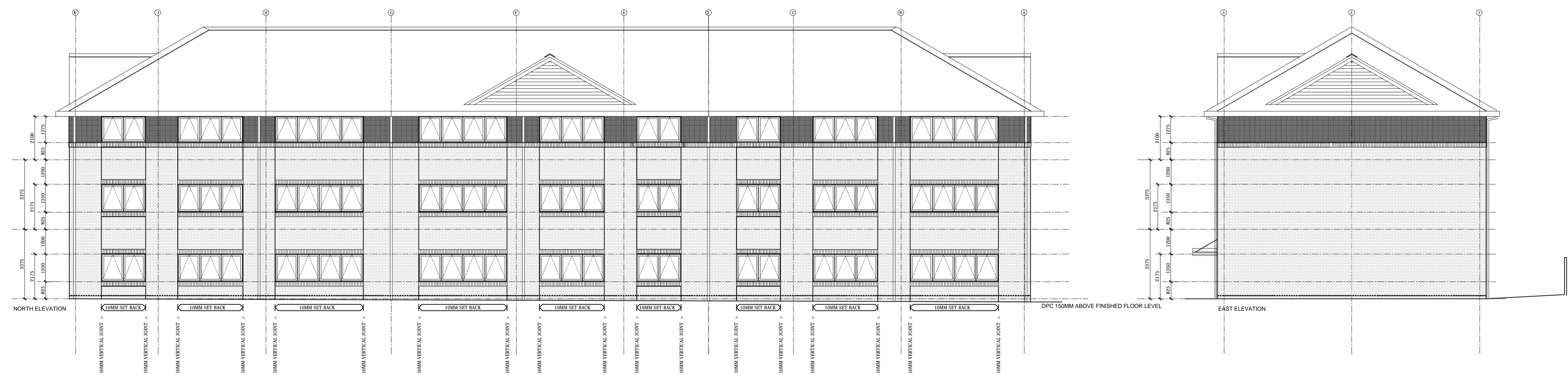
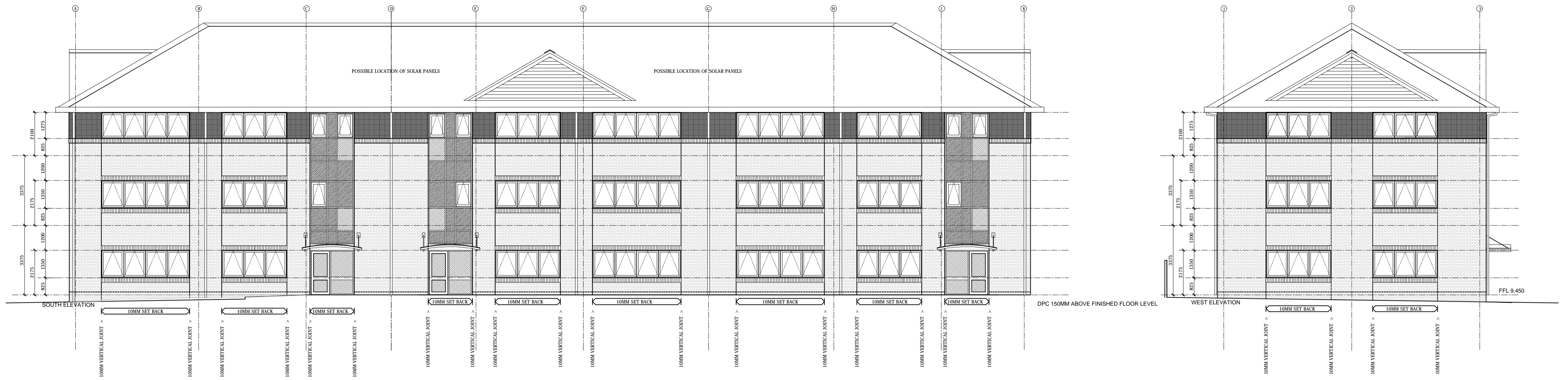
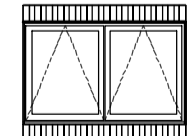
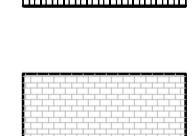
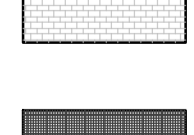
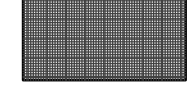
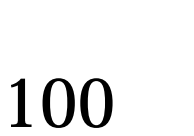
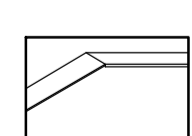
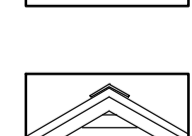
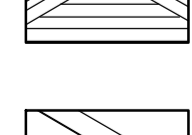
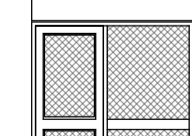
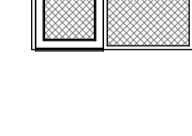

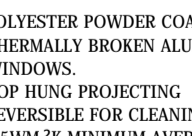
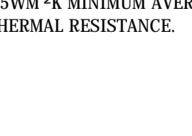

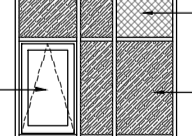


DO NOT SCALE FROM THIS DRAWING EXCEPT FOR PLANNING PURPOSES ONLY.
ALL DIMENSIONS RELATING TO SUB-CONTRACTOR OR SUPPLIERS WORK MUST BE CHECKED ON SITE AND AGREED BETWEEN THE GENERAL CONTRACTOR & THE SUB-CONTRACTORS / SUPPLIERS. ALL DIMENSIONS ARE IN MILLIMETRES. IF IN DOUBT ASK.
ALL WORKS OR MATERIALS INDICATED ON THE DRAWING ARE TO BE TO THE LATEST BRITISH STANDARDS AND ARE TO BE CARRIED OUT IN ACCORDANCE WITH THE RELEVANT CODES OF PRACTICE OR RECOGNIZED TRADE ASSOCIATIONS RECOMMENDATIONS & PUBLICATIONS.

REV.	AMENDMENT	BY	DATE



-  **FACING BRICK SOLDIER COURSE**
-  **POLYESTER POWDER COATED THERMALLY BROKEN ALUMINIUM WINDOWS. TOP HUNG PROJECTING REVERSIBLE FOR CLEANING. 1.5W/M²K MINIMUM AVERAGE THERMAL RESISTANCE.**
-  **FACING BRICK SOLDIER COURSE**
-  **FACING BRICKWORK BUILT HALF LAPPED STRETCHER BOND**
-  **THROUGH COLOUR RENDER ON BLOCKWORK**
-  **ROOF FINISH**
CEMBERT BLEN LTD WESTERLAND 600 X 300 RECTANGULAR FIBRE CEMENT SLATES TO BS EN 482 TYPE NT.
ANGULAR CONCRETE DRY FIXED VENTILATING RIDGE AND HIPS
-  **PVC BARGE BOARDS**
ANGULAR CONCRETE VENTILATING DRY FIX RIDGE
ETERNET LAPPED FIBRE CEMENT WEATHERBOARDING
-  **ANGULAR CONCRETE HIP TILES**
POWDER COATED ALUMINIUM FASCIA AND EAVES SYSTEM INCLUDING A CONCEALED ALUMINIUM OR GALVANISED STEEL GUTTER.
POWDER COATED ALUMINIUM DOWNPIPS
-  **POWDER COATED ALUMINIUM FLASHING**
ENTRANCE DOOR AND SIDELIGHT
TYPE: POLYESTER POWDER COATED ALUMINIUM THERMALLY BROKEN GLAZING: DOUBLE GLAZED UNITS
THERMAL RESISTANCE: 1.5W/M²K AVERAGE (OR 1.1 TRIPLE GLAZING TO THE NORTH ELEVATION AND 1.6 ELSEWHERE. THE BUILDING IS TO BE DESIGNED TO ACHIEVE AN AIR PERMEABILITY TARGET OF 5m³/H.
-  **MANUFACTURER: SAPA OR COMAR OR SIMILAR AND APPROVED.**
COLOUR: GREY - RAL T85
IRONMONGERY: TO BE DDA / APPROVED DOCUMENT PART M COMPLIANT.
-  **PAINTED STEEL AND POLYCARBONATE ENTRANCE PORCH**
-  **POLYESTER POWDER COATED THERMALLY BROKEN ALUMINIUM WINDOWS. TOP HUNG PROJECTING REVERSIBLE FOR CLEANING. 1.5W/M²K MINIMUM AVERAGE THERMAL RESISTANCE.**
-  **CURTAIN WALL**
TYPE: POLYESTER POWDER COATED ALUMINIUM THERMALLY BROKEN STICK SYSTEM.
FIXED GLAZING: DOUBLE GLAZED UNITS BOTH CLEAR AND ENAMELLED LOOK A LIKE
THERMAL RESISTANCE: 1.5W/M²K AVERAGE (OR 1.1 TRIPLE GLAZING TO THE NORTH ELEVATION AND 1.6 ELSEWHERE. THE BUILDING IS TO BE DESIGNED TO ACHIEVE AN AIR PERMEABILITY TARGET OF 5m³/H.
-  **MANUFACTURER: SAPA OR COMAR OR SIMILAR AND APPROVED.**
COLOUR: GREY - RAL T85
IRONMONGERY: HINGES ARE TO ALLOW TOP HUNG PROJECTING OPERATION.
RESTRICTORS ARE TO BE FITTED WHICH CAN BE RELEASED TO ENABLE THE WINDOWS TO BE REVERSED FOR CLEANING FROM THE INSIDE. HANDLES ARE TO BE LOCKABLE AND HAVE A LOCKABLE VENT SETTING.
-  **FIXED DOUBLE GLAZED UNIT WITH CLEAR GLASS**
LOOK A LIKE DOUBLE GLAZED UNIT WITH AN ENAMELLED GLASS PANE

ELEVATIONS 1:100

Project
Block B Southern Gate
Southern Sidings, Chichester.

Drawing
Elevations

Date **JULY 2016** Drawn by **SG**

Scale **1/100 @ A1** Suitability **3-Comment**

Doc No **569-TSP-01-00-DR-A-3000** Revision

the SEAMAN PARTNERSHIP Ltd
UNIT 2, MARTINS BARN, BIRDHAM ROAD
CHICHESTER, WEST SUSSEX. PO20 7BX
TEL: 01243 514131 FAX: 01243 511488
office@the-seaman-partnership.co.uk
www.the-seaman-partnership.co.uk