

## RETAIL AND LEISURE MARKET UPDATE



SOLD

### 6 New Road, Brighton

- 2,649 sq ft Class A3/E unit
- Sold to a private investor



LET

### 69 South Street, Chichester

- 2,258 sq ft Class E unit
- Let to a private individual



LET

### 15 Woodbridge Road, Guildford

- 2,521 sq ft Class E unit
- Let to Pets Corner



LET

### 20 New Road, Brighton

- 1,454 sq ft Class A3/E unit
- Let to a London based restaurant group



LET

### 41 East Street, Chichester

- 1,009 sq ft Class E unit
- Let to a private individual



LET

### 218 Copnor Road, Portsmouth

- 576 sq ft Class E unit
- Let to a private individual



SOLD

### 14 St. Georges Road, Brighton

- Freehold investment
- Sold to a private investor



LET

### 30 North Street, Chichester

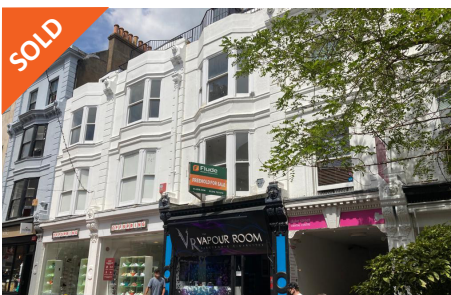
- 906 sq ft Class E unit
- Let to a private individual



SOLD

### 157 Winter Road, Southsea

- 1,086 sq ft Class A1/E unit
- Sold to a private individual



SOLD

### 27 Duke Street, Brighton

- Freehold investment
- Sold to private investors



LET

### 29 South Street, Chichester

- 1,019 sq ft Class E unit
- Let to a private individual



LET

### 104 London Road, Portsmouth

- 854 sq ft Class A1/E unit
- Let to Help 4 Special Children



**36 East Street, Brighton**

- 1,803 sq ft Class A3/E unit
- Let to a restaurant operator



**1 Water Tower Buildings, London Road, Bognor Regis**

- 749 sq ft Class E unit
- Let to a private individual



**9-11 York Road, Bognor Regis**

- 1,000 sq ft Class A1/A3/E unit
- Under offer to a private individual



**Tottington Manor Hotel, Edburton Road, Henfield**

- 12 bedroom hotel and restaurant
- Sold to locally based operators



**30 South Street, Chichester**

- 1,131 sq ft Class E unit
- Let to a private individual



**7 York Road, Bognor Regis**

- 500 sq ft Class A1/A3/E unit
- Under offer to a private individual

## FLUDE PROPERTY CONSULTANTS AGENCY TEAM



**Andrew Halfacree**  
Director  
T: 01273 740385  
E: a.halfacree@flude.com



**Sebastian Martin**  
Director  
T: 023 9262 9007  
E: s.martin@flude.com



**Mark Minchell**  
Director  
T: 01243 929136  
E: m.minchell@flude.com



**Ed Deslandes**  
Director  
T: 01273 740396  
E: e.deslandes@flude.com



**Will Thomas**  
Director  
T: 01273 740398  
E: w.thomas@flude.com



**Alex Roberts**  
Associate  
T: 01273 740386  
E: a.roberts@flude.com



**Mikael Goldsmith**  
Surveyor  
T: 01243 929141  
E: m.goldsmith@flude.com



**Clive Garner**  
Consultant  
T: 023 9262 9008  
E: c.garner@flude.com



**Mary Jackson**  
Surveyor  
T: 023 9262 9012  
E: m.jackson@flude.com



**George Cook**  
Surveyor  
T: 023 9262 9006  
E: g.cook@flude.com



**Aaron Lees**  
Assistant Surveyor  
T: 01273 740387  
E: a.lees@flude.com



**Lizzie Cottrell**  
Assistant Surveyor  
T: 023 9262 9011  
E: l.cottrell@flude.com