



38-39 Western Road  
Brighton, East Sussex BN1 2EB

**TO LET**

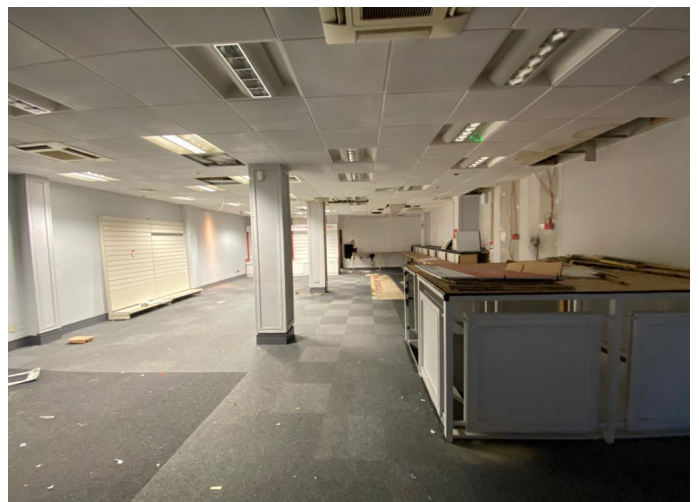
## PRIME RETAIL UNIT

Ground floor 101.54 sq m (1,093 sq ft)

Lower ground floor 78.96 sq m (850 sq ft)

### Key Features:

- Newly formed Unit
- Prime position with high foot fall
- Nearby retails include H&M, Blacks, Ann Summers & Primark
- Also close to Churchill Square Shopping Centre
- Rent £75,000 per annum





**38-39 Western Road**  
Brighton, East Sussex BN1 2EB

## Location

The property is situated in a prime retailing location on the southern side of Western Road close to Churchill Square Shopping Centre. Nearby retailers include Vodafone, Primark, H & M, Marks & Spencer, Kokoro & Costa.

## Accommodation

The accommodation is arranged over the ground and lower ground floors of a mid-terraced property. The ground floor comprises retail accommodation which splits into two levels towards the rear. The basement consists of storage space with a WC

The property has the following approximate **Net Internal Areas (NIA)**:

Floor	Sq Ft	Sq M
Ground	1,093 sq ft	101.54 sq m
Lower Ground	850 sq ft	78.96 sq m

Sizes may change slightly once works have completed.

## EPC

We understand the property to have an EPC rating of C(28).

## Planning

A new Use Classes Order (UCO) came into effect on 1st September 2020. Under the new UCO a new Use Class E was introduced to cover commercial, business and service uses. Use Class E encompasses A1, A2, A3, B1 and some D1 and D2 uses under the former UCO. We therefore understand that the premises benefit from Class E 'Commercial Business and Service' use within the Use Classes Order 2020.

Interested parties should make their own planning enquiries and satisfy themselves in this regard.

## Terms

The property is available to let by way of a new full repairing and insuring lease for a term to be agreed at a commencing rent of £75,000 per annum exclusive of rates, building insurance, service charge, heating, lighting etc.

## Business Rates

Rateable Value (2017): £To be reassessed

Should you require further information on Business Rates, please contact our in house rating surveyor Daniel Green ([d.green@flude.com](mailto:d.green@flude.com)).

## VAT & Legal Fees

Rents and prices are quoted exclusive of, but may be subject to VAT.

Each party to bear their own legal costs incurred.

Flude Property Consultants for themselves and for the vendors or lessors of this property whose agents they are give notice that: i) these particulars are set out in good faith and are believed to be correct but their accuracy cannot be guaranteed and they do not form any part of any contract; ii) no person in the employment of Flude Property Consultants has any authority to make or give any representation or warranty whatsoever in relation to this property.

Please note that whilst we endeavour to confirm the prevailing approved planning use for properties we market, we can offer no guarantees in this regard. Planning information is stated to the best of our knowledge. Interested parties are advised to make their own enquiries to satisfy themselves in respect of planning issues.

We advise interested parties to make their own enquiries to the local authority to verify the above and the level of business rates payable in view of possible transitional arrangements and small business relief.

## Viewings and Further Information

Please contact the sole agents Flude Property Consultants:

**Will Thomas**

[w.thomas@flude.com](mailto:w.thomas@flude.com)

**01273 727070**

[www.flude.com](http://www.flude.com)

**Aaron Lees**

[a.lees@flude.com](mailto:a.lees@flude.com)

**01273 727070**

[www.flude.com](http://www.flude.com)



**Flude**  
PROPERTY CONSULTANTS

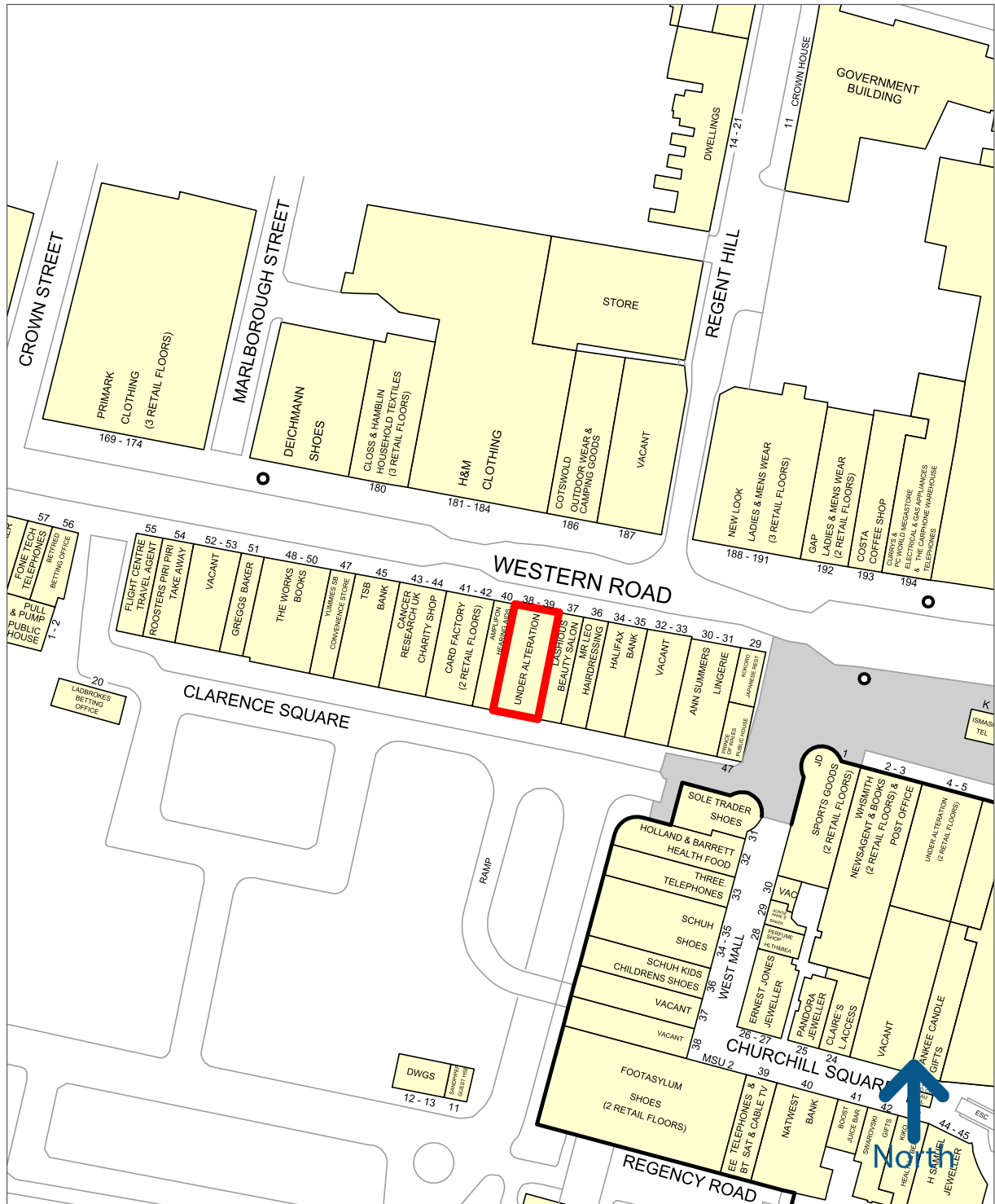




38-39 Western Road  
Brighton, East Sussex BN1 2EB



Brighton Central



50 metres

Experian Goad Plan Created: 02/02/2021  
Created By: Flude Commercial



Copyright and confidentiality Experian, 2020. © Crown  
copyright and database rights 2020. OS 100019885

For more information on our products and services:  
[www.experian.co.uk/goad](http://www.experian.co.uk/goad) | [goad.sales@uk.experian.com](mailto:goad.sales@uk.experian.com) | 0845 601 6011

OFFICES IN BRIGHTON, CHICHESTER AND PORTSMOUTH