

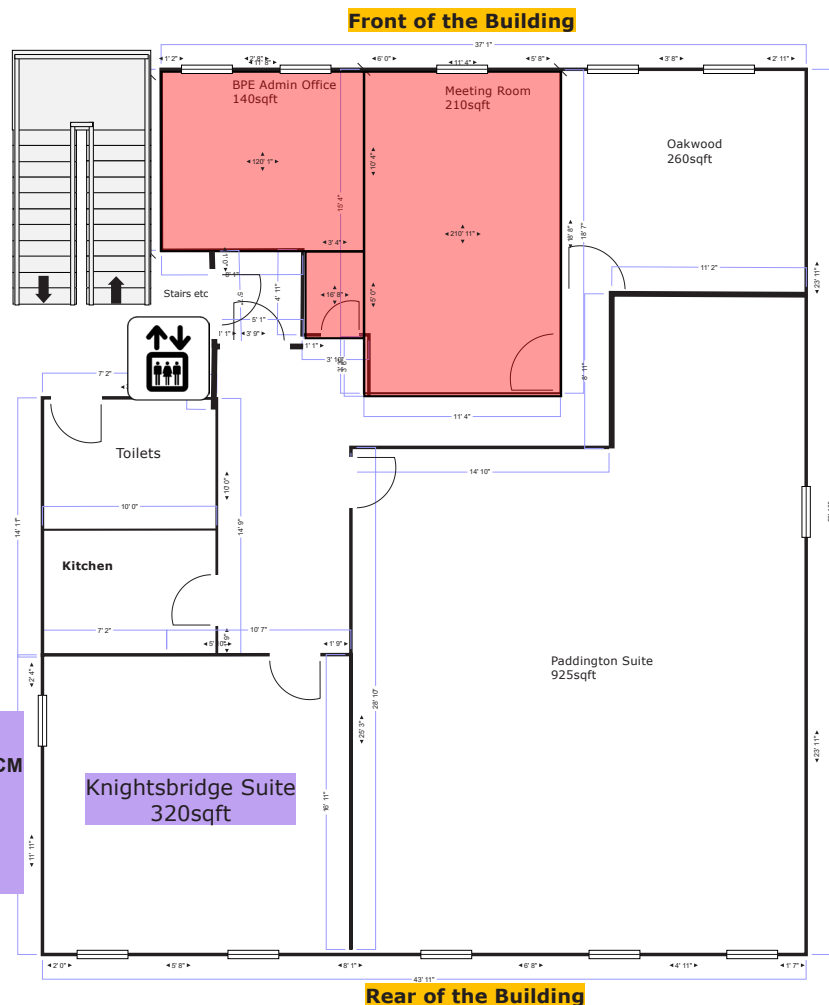


Greencoat House
St Leonard's Road, Eastbourne, East Sussex BN21 3UT

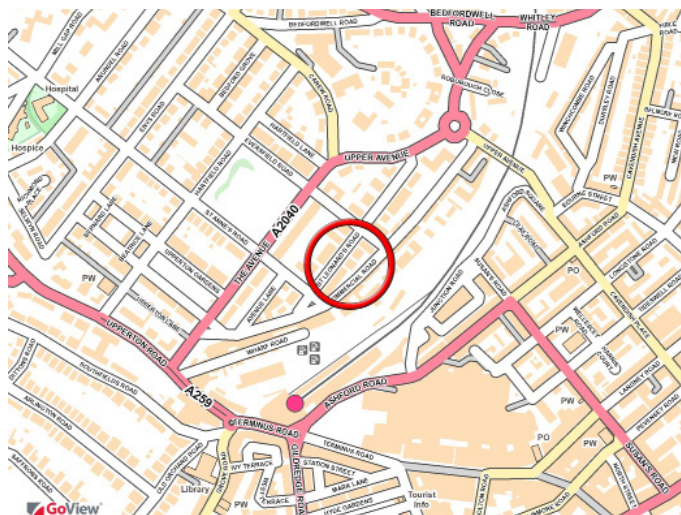
Floor Plans

1ST FLOOR GREENCOAT HOUSE

Knightsbridge Suite - 320sqft
£34 + VAT PER SQFT = £906.66 +VAT PCM
SET-UP ADMIN FEE = £1,359.29 +VAT
AVAILABLE FROM APRIL 2023



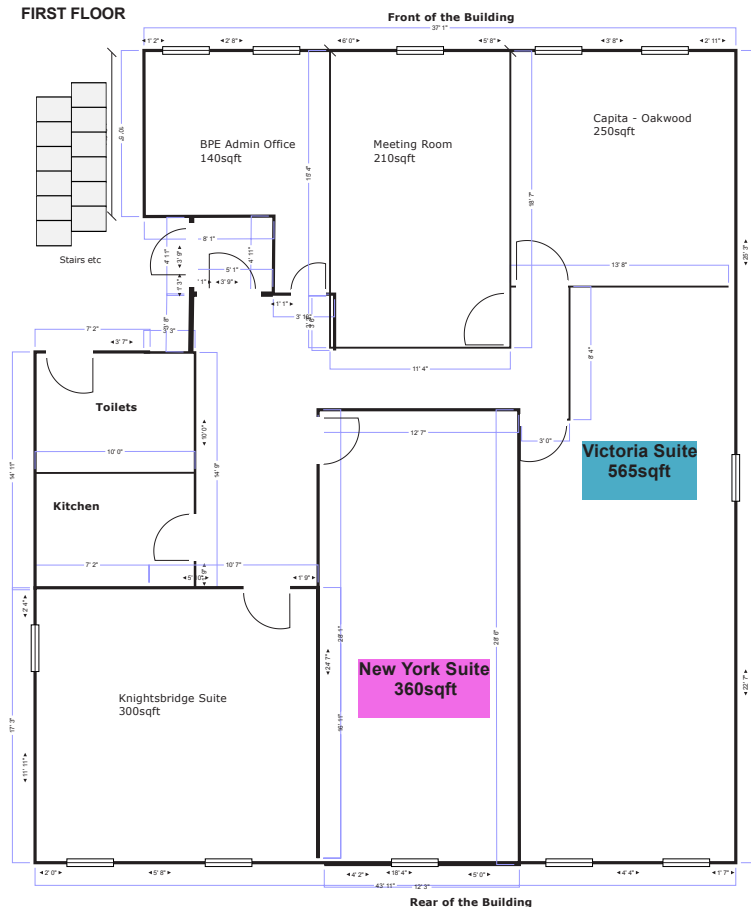
Location Map





Floor Plans

FIRST FLOOR



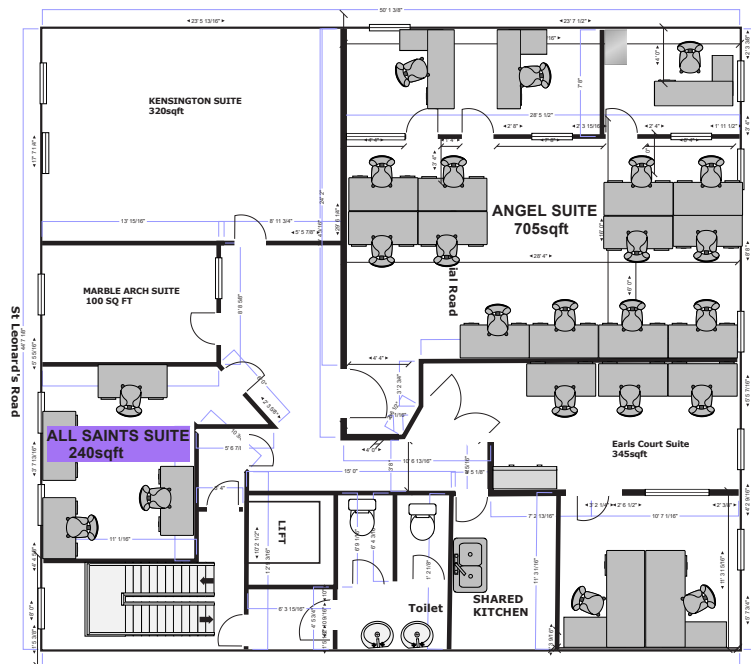
VICTORIA SUITE (1ST FLOOR - with lift & disabled access)
565 SQ FT @ £1600.83 + vat pcm
(rate of £34 + vat per sq ft)
07/09-PERSON self-contained office space

**WITH MODERN SHARED KITCHEN FACILITIES
& MEETING ROOM USE**
*ONE-OFF SET-UP/ADMIN FEE FOR
THIS SUITE £2233.72 + VAT
AVAIL FROM MARCH

NEW YORK SUITE (1ST FLOOR - with lift & disabled access)
360 SQ FT @ £1020.00 + vat pcm
(rate of £34 + vat per sq ft)
04/06-PERSON self-contained office space

**WITH MODERN SHARED KITCHEN FACILITIES
& MEETING ROOM USE**
*ONE-OFF SET-UP/ADMIN FEE FOR
THIS SUITE £1423.26 + VAT
AVAIL FROM MARCH

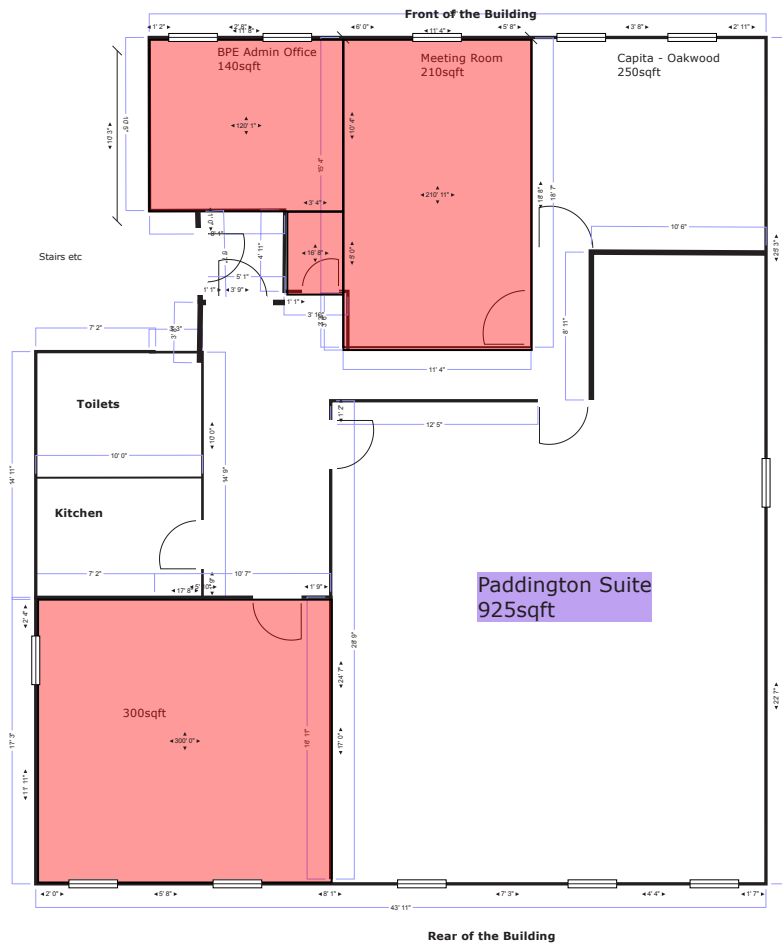
SECOND FLOOR



ALL SAINTS SUITE (2ND FLOOR - with lift & disabled access)
240 SQ FT @ £680.00 + vat pcm (rate of £34.00 + vat per sq ft)
2/6-PERSON self-contained office space

WITH MODERN SHARED KITCHEN FACILITIES & MEETING ROOM USE
*ONE-OFF SET-UP/ADMIN FEE FOR THIS SUITE £1,020.00 + VAT
AVAIL FROM JANUARY 2023

Floor Plans



PADDINGTON SUITE
(1ST FLOOR - with lift & disabled access)

925 SQ FT @ £2620.83 + vat pcm
(rate of £34 + vat per sq ft)
15-20-PERSON self-contained office space

**WITH MODERN SHARED KITCHEN FACILITIES
& MEETING ROOM USE**

***ONE-OFF SET-UP/ADMIN FEE FOR THIS SUITE £3656.98 + VAT**