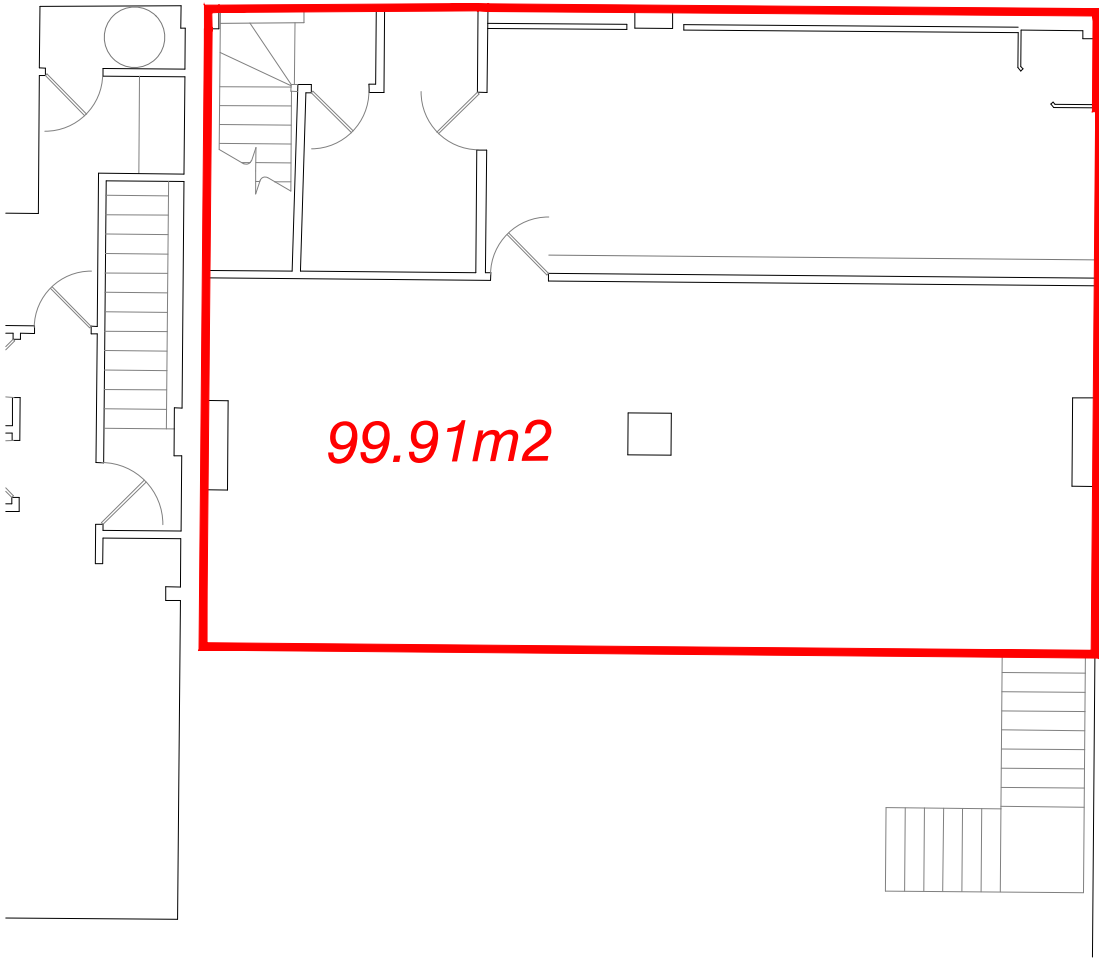
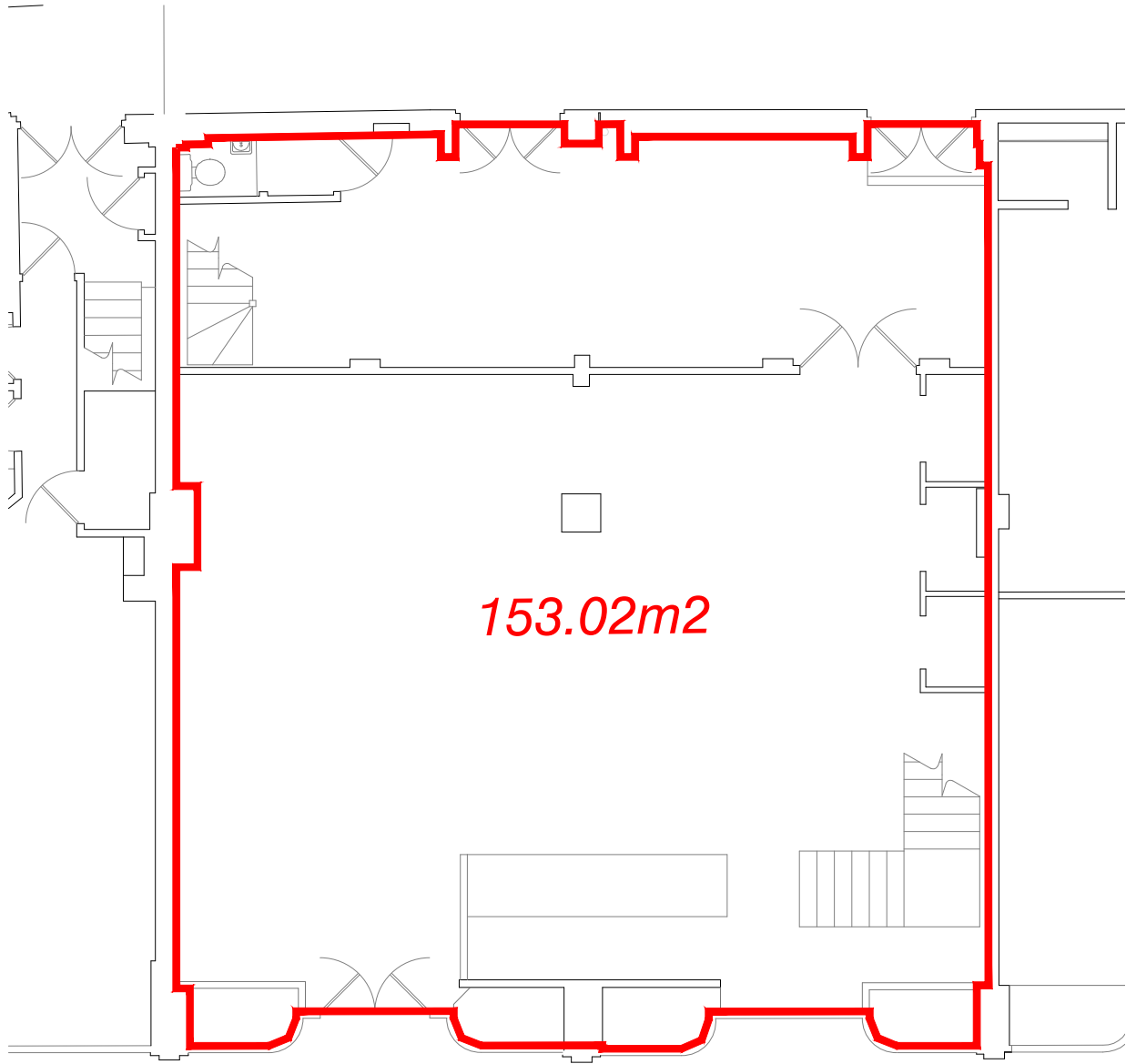



GROUND FLOOR.

MEZZANINE.



Rev	Date	Description	Drawn	Q. Ref.
<div> <div><div><div>Topographical Surveys</div><div>Site Engineering</div><div>Utility / CCTV Surveys</div></div><div><div>Measured Building Surveys</div><div>3D Laser Scanning</div><div>Revit & BIM Models</div></div></div><div><div>Rowan House</div><div>Duffield Road</div><div>Little Eaton</div><div>Derby</div><div>DE21 5DR</div><div>Tel (01332) 830044</div><div>admin@greenhatch-group.co.uk</div><div>www.greenhatch-group.co.uk</div></div><div><div>St Albans</div><div>Unit 8, The Courtyard</div><div>Albany Park</div><div>St Albans</div><div>Hertfordshire</div><div>AL1 1UA</div><div>t. (01727) 854481</div></div><div><div>Newcastle</div><div>24 Riverside Studios</div><div>Ashtons Road</div><div>Newcastle Bus Park</div><div>Newcastle-U-Tyne</div><div>NE5 7LJ</div><div>t. (01912) 736391</div></div><div><div>Poland</div><div>ul. Powernicka 91</div><div>40-761 Katowice</div><div>Poland</div><div>t. 0048 32 202 2292</div><div>www.greenhatch.pl</div></div></div>				

PROJECT

Cascades Shopping Centre

230 Commercial Road

Portsmouth

TITLE

UNIT 38

GIA Plan

SCALE

A3@ 1: 100

DATE

June 17

DRAWN

LW

QUALITY REF

GH0023

Job number

24749

Drawing No.

24749_UNIT38

Rev.

0

Comments

This plan should only be used for its original purpose. Greenhatch Group accepts no responsibility for this plan if supplied to any party other than the original client.

All dimensions should be checked on site prior to design and construction.

Drainage information (where applicable) has been visually inspected from the surface and therefore should be treated as approximate only.

Notes:

Copyright Greenhatch Group, 06/07/13