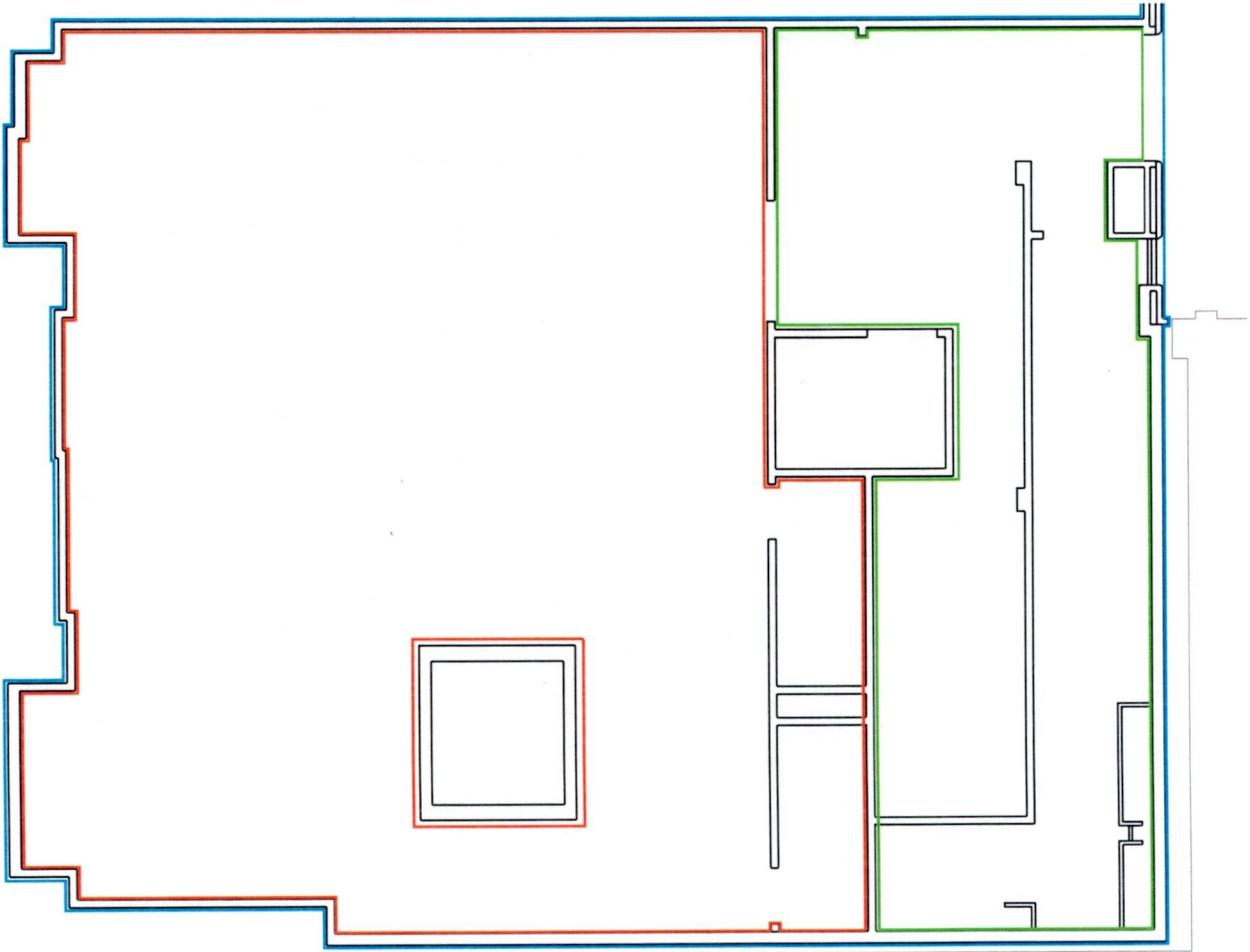


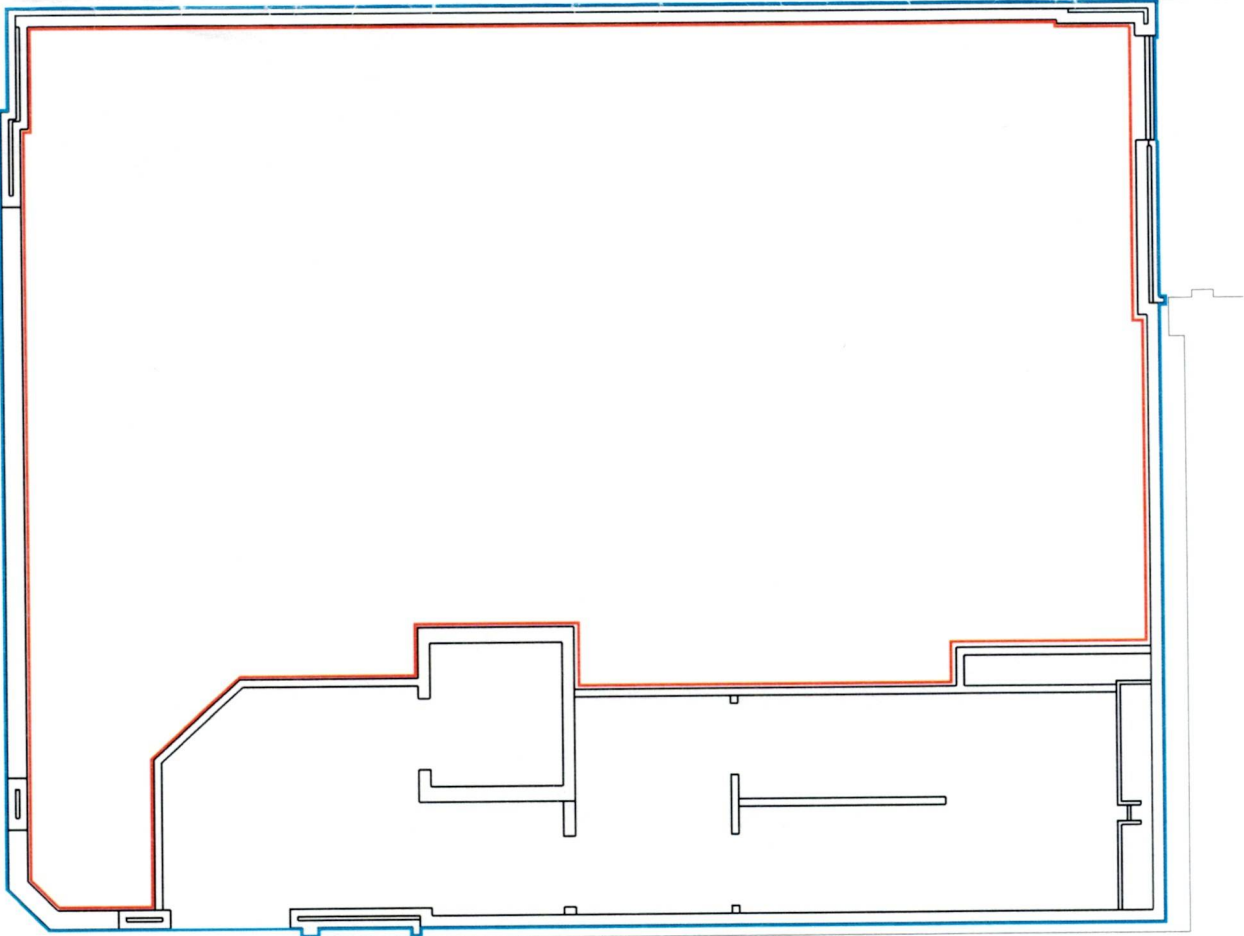
NOTES.

1. GENERAL

- (i) This drawing is not to be scaled, work to figured dimensions only, confirmed on site.
- (ii) This drawing is to be read in conjunction with all relevant architectural drawings, detailed specifications where applicable and all associated drawings in this series.
- (iii) Any discrepancy on this drawing is to be reported immediately to the partnership for clarification.
- (iv) The contractor is responsible for all temporary works and for the stability of the works in progress.



BASEMENT PLAN



GROUND FLOOR PLAN



ORIGINAL DRAWING SIZE A3



**HEMSLEY ORELL PARTNERSHIP**  
CONSULTING CIVIL & STRUCTURAL ENGINEERS

HOP House, 41 Church Road, Hove BN3 2BE  
Tel : +44 (0)1273 223600 Fax : +44 (0)1273 326767  
E-Mail : [engineers@hopuk.com](mailto:engineers@hopuk.com)  
[www.hopuk.com](http://www.hopuk.com)

Revision	Date	By	Rev. No.
Client	BRUNSWICK DEVELOPMENTS		
Project	132 QUEENS ROAD		
Title	GROUND FLOOR AND BASEMENT LEASE PLAN		
Scales	Date	Drawn	Engineer
1:100	14.12.09	C.SABIA	Checked
Project No.	Task No.	Dwg. No.	Approved
			HOP Contact
			Rev. No.