



HOVE CENTRAL

A new standard
for contemporary
workspace in Hove

BREEAM Excellent, design-led office suites from 1,000 to 6,500 sq ft

More than
office space –
a modern workplace
experience



Summary specification



EPC A



VRF air conditioning system



Exposed services



Bike storage facilities



Communal outdoor space



LG7 lighting



Raised access floors



Car parking



Arrive, connect, collaborate.

This is workspace designed for modern business – high-specification, design-led suites which support the way teams work today.

Flexible, connected and surrounded by amenity, Hove Central brings together contemporary design, cutting-edge infrastructure and everyday convenience.

A place where your team wants to be – and your business can perform at its best.



Just 5 minutes from Hove Station



CAT A & CAT A+ Options



Light-filled, contemporary styled workspaces



Spaces to focus, collaborate and thrive

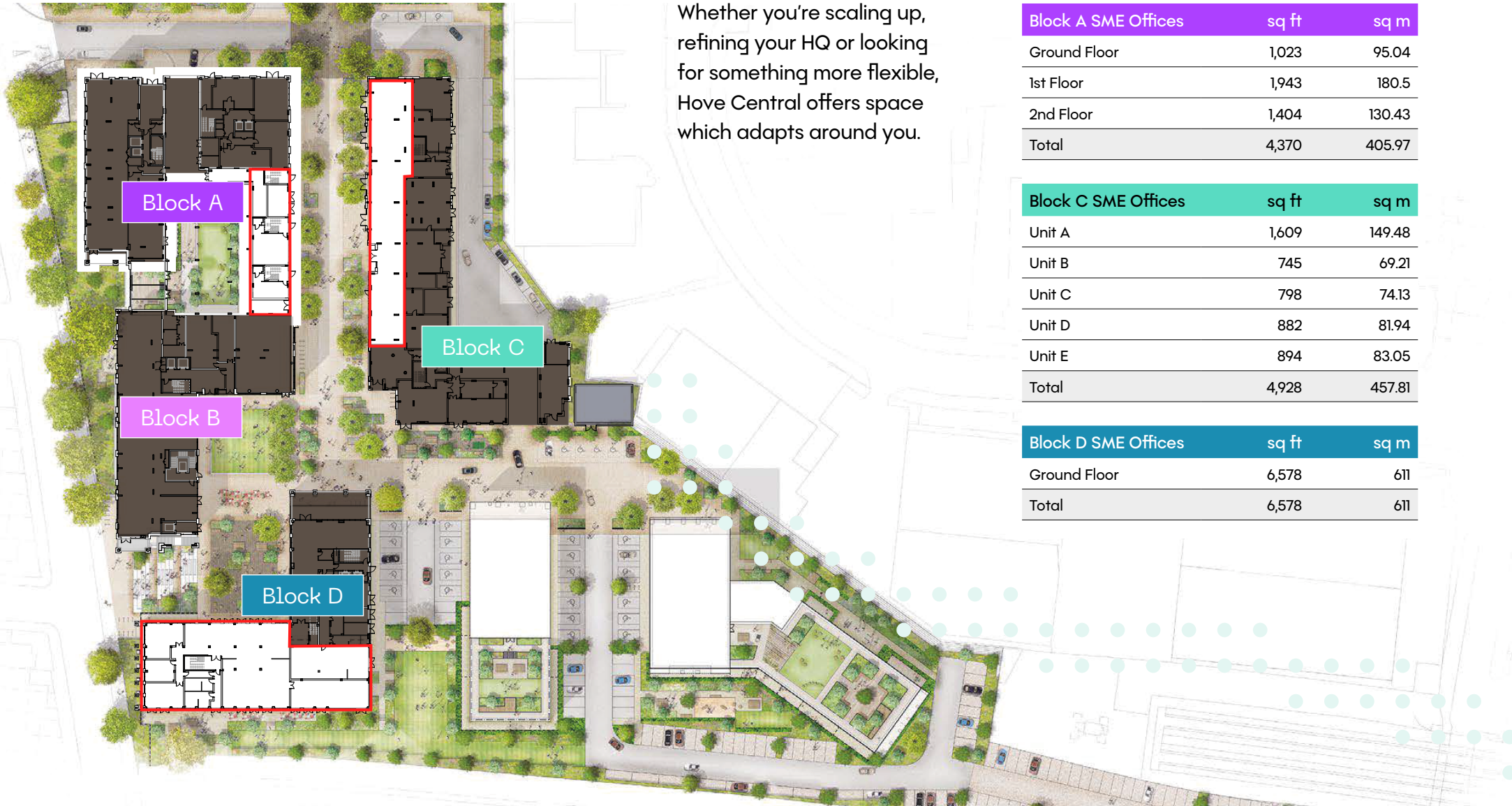


Wellness-led design integrated throughout



Flexible space for every business

Whether you're scaling up, refining your HQ or looking for something more flexible, Hove Central offers space which adapts around you.



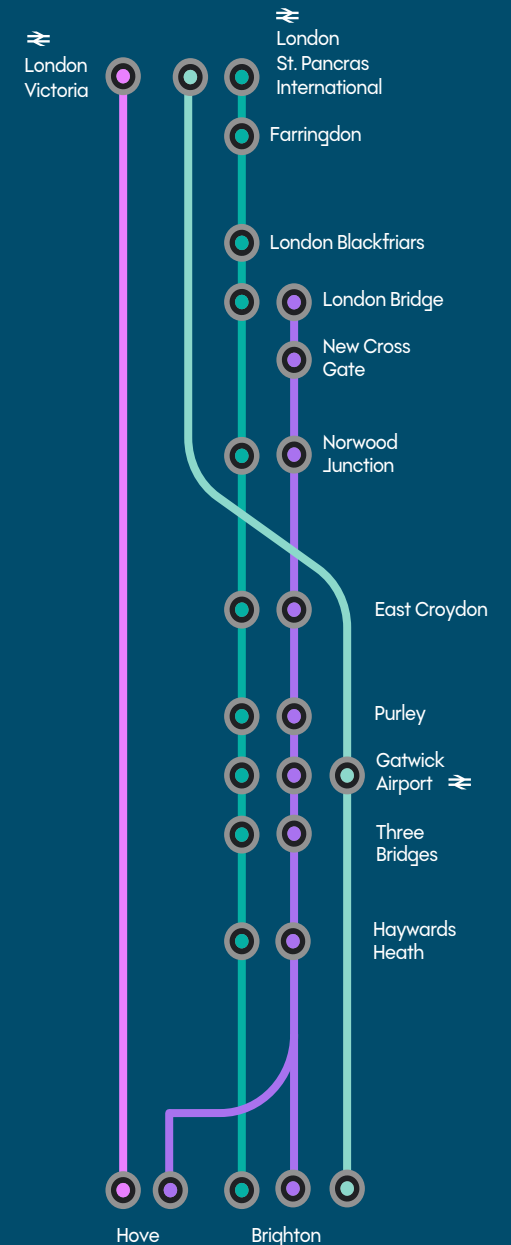
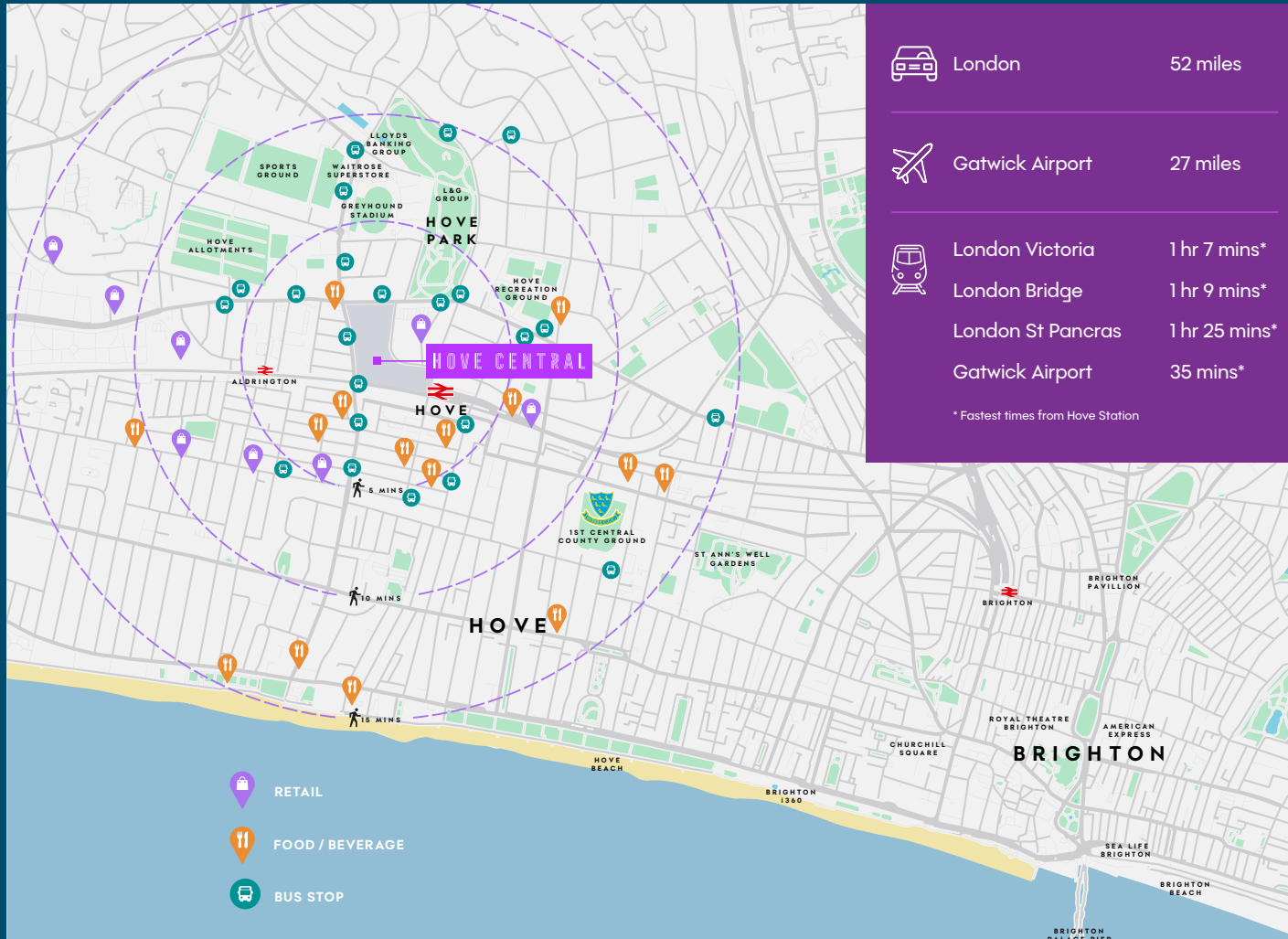
Block A SME Offices	sq ft	sq m
Ground Floor	1,023	95.04
1st Floor	1,943	180.5
2nd Floor	1,404	130.43
Total	4,370	405.97

Block C SME Offices	sq ft	sq m
Unit A	1,609	149.48
Unit B	745	69.21
Unit C	798	74.13
Unit D	882	81.94
Unit E	894	83.05
Total	4,928	457.81

Block D SME Offices	sq ft	sq m
Ground Floor	6,578	611
Total	6,578	611

Perfectly positioned

Step outside and you're instantly connected – to the city, the coast and beyond. Whether it's commuting, meeting clients or unwinding after work, everything is within easy reach.







H O V E C E N T R A L

Join a new generation of businesses choosing Hove Central as their place to work, connect and grow.

**Lambert
Smith
Hampton**

Jon Rea-Palmer
07725 372579
jreapalmer@lsh.co.uk

James Moore
07772 064440
jamoore@lsh.co.uk

Flude

01273 727070 | FLUDE.COM

Ed Deslandes
07854 883927
e.deslandes@flude.com

Nick Martin
01273 740381
n.martin@flude.com